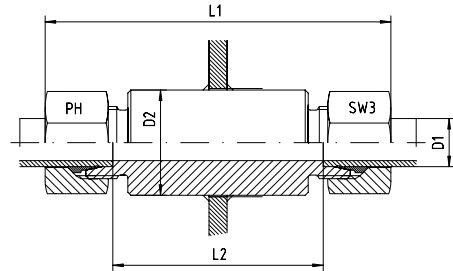


Bulkhead coupling

BOOK INDEX

SECTION INDEX

to ISO 8434-1 / DIN 2353



Series	Pressure PN	Tube O.D.		Approx. Dimensions			Part code
		D1	D2	L1	L2	SW3	
L	500	6	18	85	56	14	ESV-L-06
L	500	8	20	85	56	17	ESV-L-08
L	500	10	22	87	58	19	ESV-L-10
L	400	12	25	87	58	22	ESV-L-12
L	400	15	28	100	70	27	ESV-L-15
L	400	18	32	101	69	32	ESV-L-18
L	250	22	36	105	73	36	ESV-L-22
L	250	28	40	106	73	41	ESV-L-28
L	250	35	50	114	71	50	ESV-L-35
L	250	42	60	115	70	60	ESV-L-42

Series	Pressure	Tube O.D.		Approx. Dimensions			Part code
S	800	6	20	89	60	17	ESV-S-06
S	800	8	22	89	60	19	ESV-S-08
S	800	10	25	91	59	22	ESV-S-10
S	630	12	28	91	59	24	ESV-S-12
S	630	14	30	107	72	27	ESV-S-14
S	630	16	35	107	71	30	ESV-S-16
S	420	20	38	114	71	36	ESV-S-20
S	420	25	45	120	72	46	ESV-S-25
S	420	30	50	126	73	50	ESV-S-30
S	420	38	60	133	72	60	ESV-S-38

Fittings can be supplied with nuts with silver-plated threads to help to prevent galling, or can be supplied body only - no nut or cutting ring.

If you require silver-plated nuts, use suffix -SC. If you require body only, use suffix -OMD.

Eg. ESV-L-12-SC, or ESV-L-12-OMD.

10