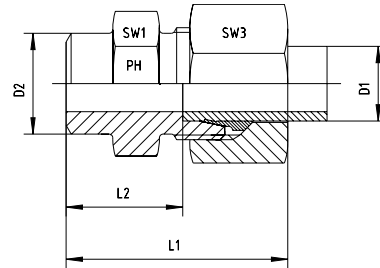


Weld stub

BOOK INDEX

SECTION INDEX

to ISO 8434-1 / DIN 2353



Series	Pressure PN	Tube O.D.		Approx. Dimensions				Part code
		D1	D2	L1	L2	SW1	SW3	
L	500	6	10	29	14.0	12	14	ASV-L-06
L	500	8	12	31	16.0	14	17	ASV-L-08
L	500	10	14	33	18.0	17	19	ASV-L-10
L	400	12	16	33	18.0	19	27	ASV-L-12
L	400	15	19	37	22.0	22	27	ASV-L-15
L	400	18	22	40	23.5	27	32	ASV-L-18
L	250	22	27	45	28.5	32	36	ASV-L-22
L	250	28	32	47	30.5	41	41	ASV-L-28
L	250	35	40	54	32.5	46	50	ASV-L-35
L	250	42	46	58	35.0	55	60	ASV-L-42

Series	Pressure PN	Tube O.D.		Approx. Dimensions				Part code
		D1	D2	L1	L2	SW1	SW3	
S	800	6	11	34	19.0	14	17	ASV-S-06
S	800	8	13	36	21.0	17	19	ASV-S-08
S	800	10	15	39	22.5	19	22	ASV-S-10
S	630	12	17	41	24.5	22	24	ASV-S-12
S	630	14	19	45	27.0	24	27	ASV-S-14
S	630	16	21	45	26.5	27	30	ASV-S-16
S	420	20	26	51	29.5	32	36	ASV-S-20
S	420	25	31	56	32.0	41	46	ASV-S-25
S	420	30	36	62	35.5	46	50	ASV-S-30
S	420	38	44	69	38.0	55	60	ASV-S-38

Fittings can be supplied with nuts with silver-plated threads to help to prevent galling, or can be supplied body only - no nut or cutting ring.

If you require silver-plated nuts, use suffix -SC. If you require body only, use suffix -OMD.

Eg. ASV-L-12-SC, or ASV-L-12-OMD.