

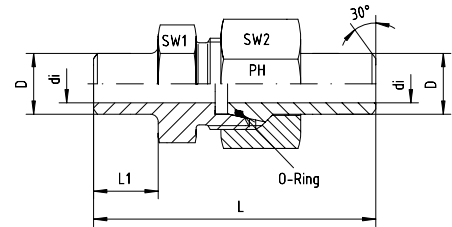
Weld coupling

BOOK INDEX

SECTION INDEX

to ISO 8434-1 / DIN 2353

Supplied with NBR O-ring,
Viton on request



| Series | Pressure PN | Tube O. D. | Approx. Dimensions | | | | | | O-ring | Part code |
|--------|----------------|------------|--------------------|------|----|----|-----|-----|------------|--------------|
| | | | L | L1 | D | di | SW1 | SW3 | | |
| S | 528 | 6 x 1.5 | 52.5 | 10.0 | 6 | 3 | 14 | 17 | 4.0 x 1.5 | ASV-K-6x1.5 |
| S | 414 | 8 x 1.5 | 52.5 | 10.0 | 8 | 5 | 17 | 19 | 6.0 x 1.5 | ASV-K-8x1.5 |
| S | 528 | 8 x 2 | 52.5 | 10.0 | 8 | 4 | 17 | 19 | 6.0 x 1.5 | ASV-K-8x2 |
| S | 249 | 10 x 1 | 58.0 | 10.0 | 10 | 8 | 19 | 22 | 8.0 x 1.5 | ASV-K-10x1 |
| S | 358 | 10 x 1.5 | 58.0 | 10.0 | 10 | 7 | 19 | 22 | 8.0 x 1.5 | ASV-K-10x1.5 |
| S | 460 | 10 x 2 | 58.0 | 10.0 | 10 | 6 | 19 | 22 | 8.0 x 1.5 | ASV-K-10x2 |
| S | 305 | 12 x 1.5 | 63.0 | 15.0 | 12 | 9 | 22 | 24 | 10.0 x 1.5 | ASV-K-12x1.5 |
| S | 393 | 12 x 2 | 63.0 | 15.0 | 12 | 8 | 22 | 24 | 10.0 x 1.5 | ASV-K-12x2 |
| S | 476 | 12 x 2.5 | 63.0 | 15.0 | 12 | 7 | 22 | 24 | 10.0 x 1.5 | ASV-K-12x2.5 |
| S | 343 | 14 x 2 | 73.0 | 15.0 | 14 | 10 | 24 | 27 | 10.0 x 2.0 | ASV-K-14x2 |
| S | 487 | 14 x 3 | 73.0 | 15.0 | 14 | 8 | 24 | 27 | 10.0 x 2.0 | ASV-K-14x3 |
| S | 305 | 16 x 2 | 73.5 | 16.5 | 16 | 12 | 27 | 30 | 13.0 x 2.0 | ASV-K-16x2 |
| S | 372 | 16 x 2.5 | 73.5 | 16.5 | 16 | 11 | 27 | 30 | 13.0 x 2.0 | ASV-K-16x2.5 |
| S | 400 | 16 x 3 | 73.5 | 16.5 | 16 | 10 | 27 | 30 | 13.0 x 2.0 | ASV-K-16x3 |
| S | 249 | 20 x 2 | 83.5 | 19.0 | 20 | 16 | 32 | 36 | 16.0 x 2.0 | ASV-K-20x2 |
| S | 305 | 20 x 2.5 | 83.5 | 19.0 | 20 | 15 | 32 | 36 | 16.3 x 2.4 | ASV-K-20x2.5 |
| S | 358 | 20 x 3 | 83.5 | 19.0 | 20 | 14 | 32 | 36 | 16.3 x 2.4 | ASV-K-20x3 |
| S | 400 | 20 x 4 | 83.5 | 19.0 | 20 | 12 | 32 | 36 | 16.3 x 2.4 | ASV-K-20x4 |
| S | 294 | 25 x 3 | 92.5 | 19.5 | 25 | 19 | 41 | 46 | 21.3 x 2.4 | ASV-K-25x3 |
| S | 379 | 25 x 4 | 92.5 | 19.5 | 25 | 17 | 41 | 46 | 21.3 x 2.4 | ASV-K-25x4 |
| S | 400 | 25 x 5 | 92.5 | 19.5 | 25 | 15 | 41 | 46 | 21.3 x 2.4 | ASV-K-25x5 |
| S | 249 | 30 x 3 | 101.5 | 23.0 | 30 | 24 | 46 | 50 | 25.3 x 2.4 | ASV-K-30x3 |
| S | 323 | 30 x 4 | 101.5 | 23.0 | 30 | 22 | 46 | 50 | 25.3 x 2.4 | ASV-K-30x4 |
| S | 393 | 30 x 5 | 101.5 | 23.0 | 30 | 20 | 46 | 50 | 25.3 x 2.4 | ASV-K-30x5 |
| S | 400 | 30 x 6 | 101.5 | 23.0 | 30 | 18 | 46 | 50 | 25.3 x 2.4 | ASV-K-30x6 |
| S | 261 | 38 x 4 | 108.0 | 22.0 | 38 | 30 | 55 | 60 | 34.0 x 2.5 | ASV-K-38x4 |
| S | 315 | 38 x 5 | 108.0 | 22.0 | 38 | 28 | 55 | 60 | 34.0 x 2.5 | ASV-K-38x5 |
| S | 315 | 38 x 6 | 108.0 | 22.0 | 38 | 26 | 55 | 60 | 34.0 x 2.5 | ASV-K-38x6 |
| S | 315 | 38 x 7 | 108.0 | 22.0 | 38 | 24 | 55 | 60 | 34.0 x 2.5 | ASV-K-38x7 |
| S | 250 | 50 x 5 | 118.0 | 23.0 | 50 | 40 | 70 | 80 | 46.0 x 3.0 | ASV-K-50x5 |
| S | 310 | 50 x 6 | 118.0 | 23.0 | 50 | 38 | 70 | 80 | 46.0 x 3.0 | ASV-K-50x6 |
| S | 350 | 50 x 7 | 118.0 | 23.0 | 50 | 36 | 70 | 80 | 46.0 x 3.0 | ASV-K-50x7 |

| Series | Pressure PN | Tube O. D. | Approx. Dimensions | | | | | | O-ring | Part code |
|--------|----------------|------------|--------------------|------|----|----|-----|-----|------------|--------------|
| | | | L | L1 | D | di | SW1 | SW3 | | |
| L | 323 | 15 x 2 | 54.5 | 15.0 | 15 | 11 | 22 | 27 | 12.0 x 2.0 | ASV-K-15x2 |
| L | 315 | 18 x 2 | 57.5 | 16.0 | 18 | 14 | 27 | 32 | 15.0 x 2.0 | ASV-K-18x2 |
| L | 280 | 22 x 2.5 | 74.0 | 19.0 | 22 | 17 | 32 | 36 | 19.0 x 2.0 | ASV-K-22x2.5 |
| L | 265 | 28 x 3 | 78.0 | 19.0 | 28 | 22 | 41 | 41 | 25.0 x 2.0 | ASV-K-28x3 |
| L | 231 | 35 x 3 | 87.5 | 22.0 | 35 | 29 | 46 | 50 | 32.0 x 2.5 | ASV-K-35x3 |
| L | 182 | 42 x 3 | 87.0 | 22.0 | 42 | 36 | 55 | 60 | 38.0 x 2.5 | ASV-K-42x3 |

10