

## SAE Split Flange Halves

BOOK INDEX

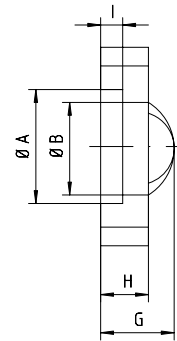
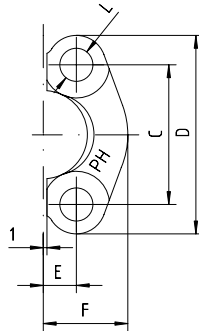
SECTION INDEX

### SAE split flange clamps

3000 psi - Code 61

6000 psi - Code 62

According to SAE J518 and ISO 6162-1 (Code 61) or -2 (Code 62).



2

### 3000 psi - Code 61

Max. Working Pressure bar	Nominal Flange Size in	Approx. Dimension										Screws		Part code
		A	B	C	D	E	F	G	H	I	L	metr.	unc.	
345	1/2"	30.96	24.26	38.10	54	8.74	22.8	19	13	6.22	8.50	M 8 x 25	5/16" x 1 1/4"	FLH-3-1/2"
345	3/4"	38.89	32.13	47.63	65	11.13	25.9	22	14	6.22	10.50	M 10 x 30	3/8" x 1 1/4"	FLH-3-3/4"
345	1"	45.24	38.48	52.37	70	13.08	29.2	24	16	7.49	10.50	M 10 x 30	3/8" x 1 1/4"	FLH-3-1"
276	1 1/4"	51.59	43.69	58.72	79	15.09	36.3	22	16	7.49	12.00	M 10 x 35	7/16" x 1 1/2"	FLH-3-1 1/4"
207	1 1/2"	61.09	50.80	69.85	94	17.86	41.1	25	16	7.49	13.50	M 12 x 35	1/2" x 1 1/2"	FLH-3-1 1/2"
207	2"	72.24	62.74	77.77	102	21.44	48.2	26	16	9.02	13.50	M 12 x 35	1/2" x 1 1/2"	FLH-3-2"
172	2 1/2"	84.94	74.93	88.90	114	25.40	54.1	38	19	9.02	13.50	M 12 x 40	1/2" x 1 1/2"	FLH-3-2 1/2"
138	3"	102.39	90.93	106.38	135	30.96	65.3	41	22	9.02	16.75	M 16 x 45	5/8" x 2"	FLH-3-3"

### 6000 psi - Code 62

Max. Working Pressure bar	Nominal Flange Size in	Approx. Dimension										Screws		Part code
		A	B	C	D	E	F	G	H	I	L	metr.	unc.	
420	1/2"	32.45	24.64	40.49	56	9.12	23.6	22	16	7.24	8.50	M 8 x 30	5/16" x 1 1/4"	FLH-6-1/2"
420	3/4"	42.06	32.51	50.80	71	11.91	30.0	28	19	8.26	10.50	M 10 x 35	3/8" x 1 1/2"	FLH-6-3/4"
420	1"	48.41	38.86	57.15	81	13.89	34.8	33	24	9.02	12.50	M 12 x 45		FLH-6-1"
420	1 1/4"	54.76	44.45	66.68	95	15.88	38.6	38	27	9.78	14.50	M 14 x 50		FLH-6-1 1/4"
420	1 1/2"	64.29	51.56	79.38	113	18.26	47.5	43	30	12.07	16.75	M 16 x 55	5/8" x 2"	FLH-6-1 1/2"
420	2"	80.16	67.56	96.82	133	22.23	56.9	52	37	12.07	21.00	M 20 x 65	3/4" x 2 1/2"	FLH-6-2"

Thread	Part code
M 8 x 25	MS-8x25
M 8 x 30	MS-8x30
M 10 x 30	MS-10x30
M 10 x 35	MS-10x35
M 12 x 35	MS-12x35
M 12 x 40	MS-12x40
M 12 x 45	MS-12x45
M 14 x 50	MS-14x50
M 16 x 45	MS-16x45
M 16 x 55	MS-16x55
M 20 x 65	MS-20x65