

BSPP male male reducer

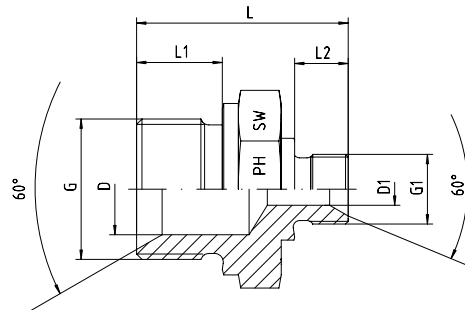
BOOK INDEX

SECTION INDEX

BSP parallel 60° coned male male reducing adapter.

Form B sealing shoulder

ISO 8434-6 / BS 5200



5

Pressure PN	Thread		Approx. Dimensions						Part code
	G = BSP	G1 = BSP	L	L1	L2	D	D1	SW	
400	1/4"-19	1/8"-28	28.0	12.0	8	6.0	4.5	19	1050510-04-02
400	3/8"-19	1/8"-28	30.5	12.0	8	9.0	4.5	22	1050510-06-02
400	3/8"-19	1/4"-19	33.0	12.0	10	9.0	6.0	22	1050510-06-04
400	1/2"-14	1/8"-28	34.0	14.0	8	13	4.5	27	1050510-08-02
400	1/2"-14	1/4"-19	38.0	14.0	11	12.5	7.0	27	1050510-08-04
400	1/2"-14	3/8"-19	40.0	14.0	12	13.0	9.0	27	1050510-08-06
400	5/8"-14	3/8"-19	40.0	14.0	12	14.0	8.0	30	1050510-10-06
400	5/8"-14	1/2"-14	42.0	16.0	14	14.5	11.5	30	1050510-10-08
400	3/4"-14	1/4"-19	39.5	16.0	10	18.0	6.0	32	1050510-12-04
400	3/4"-14	3/8"-19	41.0	16.0	12	18.0	9.0	32	1050510-12-06
400	3/4"-14	1/2"-14	45.0	16.0	14	18.0	13.0	32	1050510-12-08
400	3/4"-14	5/8"-14	45.0	16.0	16	17.0	14.5	32	1050510-12-10
400	1"-11	3/8"-19	47.0	18.0	12	23.0	9.0	41	1050510-16-06
400	1"-11	1/2"-14	48.0	18.0	14	23.5	13.0	41	1050510-16-08
400	1"-11	3/4"-14	53.0	18.0	16	23.5	17.0	41	1050510-16-12
200	1 1/4"-11	1/2"-14	51.0	20.0	14	30.0	13.0	50	1050510-20-08
200	1 1/4"-11	3/4"-14	53.5	20.0	16	30.5	18.0	50	1050510-20-12
200	1 1/4"-11	1"-11	58.0	20.0	18	30.5	23.0	50	1050510-20-16
200	1 1/2"-11	3/4"-14	55.0	22.0	16	37.0	17.0	55	1050510-24-12
200	1 1/2"-11	1"-11	57.0	22.0	18	37.0	23.5	55	1050510-24-16
200	1 1/2"-11	1 1/4"-11	61.0	22.0	20	37.0	30.0	55	1050510-24-20
100	2"-11	1"-11	62.0	25.0	18	43.0	23.5	70	1050510-32-16
100	2"-11	1 1/4"-11	62.0	25.0	20	45.0	30.0	70	1050510-32-20
100	2"-11	1 1/2"-11	64.0	25.0	22	45.0	37.0	70	1050510-32-24