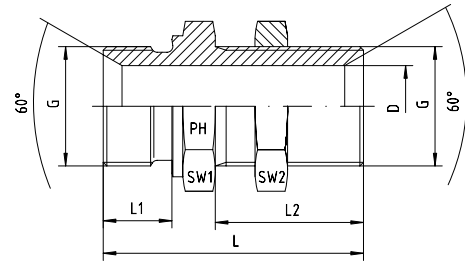
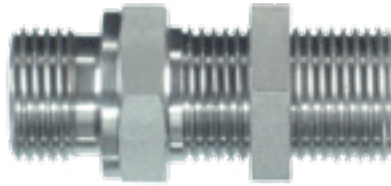


## BSP parallel 60° coned male male bulkhead, complete with locknut.

BOOK INDEX

SECTION INDEX

**BSP parallel 60° coned male male bulkhead, complete with locknut.**  
ISO 8434-6 / BS 5200



5

Pressure PN	Thread G	Approx. Dimensions						Part code
		L	L1	L2	D	SW1	SW2	
400	1/8"-28	42.5	8	28	4.5	14	14	1050511-02
400	1/4"-19	46.0	11	28	6.0	19	19	1050511-04
400	3/8"-19	52.0	12	32	8.0	22	22	1050511-06
400	1/2"-14	59.0	14	35	11.0	27	27	1050511-08
400	5/8"-14	63.0	16	35	14.5	30	30	1050511-10
400	3/4"-14	66.0	16	38	16.5	32	32	1050511-12
400	1"-11	72.0	19	41	22.5	41	41	1050511-16
200	1 1/4"-11	78.0	20	44	30.5	50	50	1050511-20
200	1 1/2"-11	84.0	22	48	37.0	55	55	1050511-24
100	2"-11	91.0	23	48	46.0	70	70	1050511-32