




Pegasus
hydraulics

37° flare adapters for
compression fittings





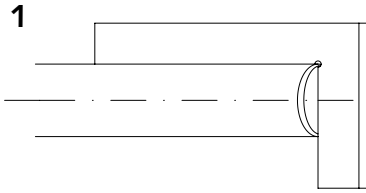
	Product Groups	Page
	Assembly instructions	7.02
	Component Parts	
	Nuts	7.03
	Flare sleeves	7.04
	37° flare adapters	7.05
	Complete sets	7.06

These adapters enable standard 24° ISO 8434-1 / DIN 2353 fittings to be used with tube which has been flared in accordance with the 37° JIC ISO 8434-2 / J514 standard.

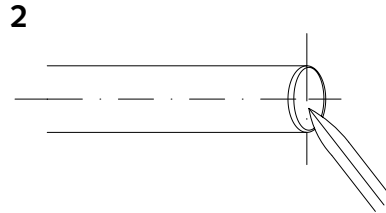
Assembly instructions

BOOK INDEX

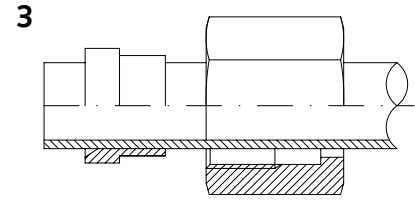
SECTION INDEX



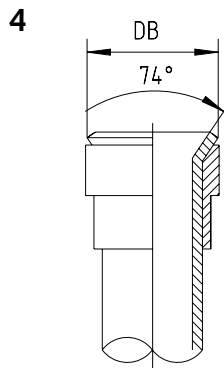
1. Cut the tube square (do not use a pipe cutter).



2. Deburr the pipe inside and outside, do not chamfer. Clean the tube end, otherwise the sealing surface of the tube will be damaged when it is flared.



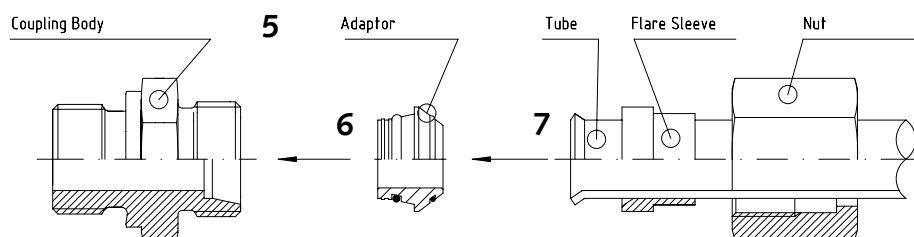
3. Slide the nut and the sleeve over the tube as shown in the illustration.



Tube O.D.	06	08	10	12	14	15	16	18
DB min.	9.1	11.3	13.1	15.3	18.6	19.1	20.6	23.2
DB max.	10.0	12.0	14.0	16.0	19.6	20.0	22.0	24.0
Tube O.D.	20	22	25	28	30	35	38	42
DB min.	25.6	26.5	31.1	32.7	37.0	41.8	46.0	48.8
DB max.	26.8	27.5	33.0	33.3	38.7	42.7	47.2	49.8

4. Flare the tube using flaring tools or a flaring machine. The flare outside diameter (DB) must not exceed the limits in the table. The flared cone must be concentric to the OD of the tube and the sleeve. The inside of the tube must be clean and free from striations.
5. To prevent cold welding / "galling", the threads must be lubricated - use Gleitmo 810 or High Tech Paste ASW 040P - see section 12. These are special lubricants for stainless steel fittings.
6. / 7. Press the flare adapter into the fitting body, then press the flared tube onto the face of the adapter. The sleeve and nut should already be on the tube - screw nut onto fitting body by hand. Using a spanner, tighten the nut until a noticeable increase in torque occurs, then proceed to tighten another 1/4 turn.

For every time the connection is undone, re-tightening must be done without overtightening.



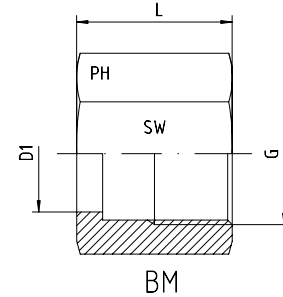
Nuts

BOOK INDEX

SECTION INDEX

37° flare adapters used in conjunction with ISO 8434-1 / DIN 2353 fitting bodies

Port to W DIN 3861



Series	Pressure PN	Tube O.D. D1 + Tol.	Thread G	SW	L	Part code
L	500	6	M 12 x 1.5	14	17.0	BM-06-L
L	500	8	M 14 x 1.5	17	18.0	BM-08-L
L	500	10	M 16 x 1.5	19	19.5	BM-10-L
L	400	12	M 18 x 1.5	22	20.5	BM-12-L
L	400	15	M 22 x 1.5	27	23.0	BM-15-L
L	400	18	M 26 x 1.5	32	23.0	BM-18-L
L	315	22	M 30 x 2	36	27.5	BM-22-L
L	250	28	M 36 x 2	41	27.5	BM-28-L
L	250	35	M 45 x 2	50	30.0	BM-35-L
L	250	42	M 52 x 2	60	34.0	BM-42-L

Series	Pressure PN	Tube O.D. D1 + Tol.	Thread G	SW	L	Part code
S	800	6	M 14 x 1.5	17	18.0	BM-06-S
S	800	8	M 16 x 1.5	19	20.0	BM-08-S
S	800	10	M 18 x 1.5	22	20.5	BM-10-S
S	630	12	M 20 x 1.5	24	21.0	BM-12-S
S	630	14	M 22 x 1.5	27	23.0	BM-14-S
S	630	16	M 24 x 1.5	30	26.5	BM-16-S
S	420	20	M 30 x 2	36	27.5	BM-20-S
S	420	25	M 36 x 2	46	30.5	BM-25-S
S	420	30	M 42 x 2	50	32.0	BM-30-S
S	420 (1)	38	M 52 x 2	60	38.0	BM-38-S

(1) In the 420 bar section, the normal safety factor of 4:1 is reduced to 3:1.

7

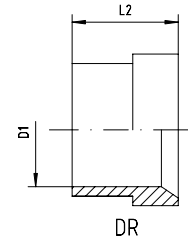
Sleeves

BOOK INDEX

SECTION INDEX

37° flare adapters used in conjunction with ISO 8434-1 / DIN 2353 fitting bodies

Port to W DIN 3861



Series	Pressure PN	Tube O.D. D1 + Tol.	L2	Part code
L	500	6	10.5	DR-06-L
L	500	8	11.0	DR-08-L
L	500	10	12.5	DR-10-L
L	400	12	13.0	DR-12-L
L	400	15	14.0	DR-15-L
L	400	18	14.5	DR-18-L
L	315	22	18.0	DR-22-L
L	250	28	17.0	DR-28-L
L	250	35	19.0	DR-35-L
L	250	42	21.0	DR-42-L

Series	Pressure PN	Tube O.D. D1 + Tol.	L2	Part code
S	800	6	10.5	DR-06-S
S	800	8	11.0	DR-08-S
S	800	10	12.5	DR-10-S
S	630	12	13.0	DR-12-S
S	630	14	14.5	DR-14-S
S	630	16	17.0	DR-16-S
S	420	20	17.5	DR-20-S
S	420	25	20.0	DR-25-S
S	420	30	21.5	DR-30-S
S	420 (1)	38	26.5	DR-38-S

(1) In the 420 bar section, the normal safety factor of 4:1 is reduced to 3:1.

O-ring adapter

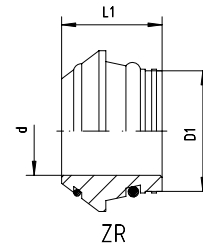
BOOK INDEX

SECTION INDEX

37° flare adapters used in conjunction with ISO 8434-1 / DIN 2353 fitting bodies

Supplied with NBR O-ring, Viton upon request

Port to W DIN 3861



Series	Pressure PN	Tube O.D. D1	d	L1	Part code
L	500	6	3	11.5	ZR-06-L
L	500	8	5	12.0	ZR-08-L
L	500	10	6	12.5	ZR-10-L
L	400	12	8	12.5	ZR-12-L
L	400	15	11	12.5	ZR-15-L
L	400	18	14	13.0	ZR-18-L
L	315	22	17	14.2	ZR-22-L
L	250	28	23	14.7	ZR-28-L
L	250	35	28	18.5	ZR-35-L
L	250	42	35	20.5	ZR-42-L

Series	Pressure PN	Tube O.D. D1	d	L1	Part code
S	800	6	3	11.5	ZR-06-S
S	800	8	5	12.0	ZR-08-S
S	800	10	6	12.5	ZR-10-S
S	630	12	8	12.5	ZR-12-S
S	630	14	9	14.0	ZR-14-S
S	630	16	11	15.0	ZR-16-S
S	420	20	14	18.5	ZR-20-S
S	420	25	19	20.0	ZR-25-S
S	420	30	23	22.0	ZR-30-S
S	420 (1)	38	30	26.0	ZR-38-S

(1) In the 420 bar section, the normal safety factor of 4:1 is reduced to 3:1.

7

37° flare adapter set

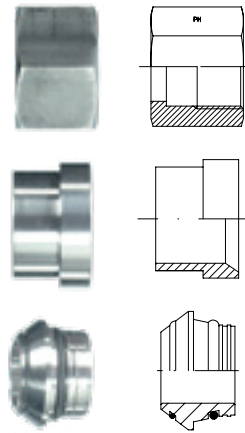
BOOK INDEX

SECTION INDEX

37° flare adapters used in conjunction with ISO 8434-1 / DIN 2353 fitting bodies

Supplied with NBR O-ring, Viton upon request

Port to W DIN 3861



Series	Pressure PN	Tube O.D. D1 + Tol.	Thread G	L	L1	L2	d	SW	Part code
L	500	6	M 12 x 1.5	17.0	11.5	10.5	3	14	BAN-06-L
L	500	8	M 14 x 1.5	18.0	12.0	11.0	5	17	BAN-08-L
L	500	10	M 16 x 1.5	19.5	12.5	12.5	6	19	BAN-10-L
L	400	12	M 18 x 1.5	20.5	12.5	13.0	8	22	BAN-12-L
L	400	15	M 22 x 1.5	23.0	12.5	14.0	11	27	BAN-15-L
L	400	18	M 26 x 1.5	23.0	13.0	14.5	14	32	BAN-18-L
L	315	22	M 30 x 2	27.5	14.2	18.0	17	36	BAN-22-L
L	250	28	M 36 x 2	27.5	14.7	17.0	23	41	BAN-28-L
L	250	35	M 45 x 2	30.0	18.5	19.0	28	50	BAN-35-L
L	250	42	M 52 x 2	34.0	20.5	21.0	35	60	BAN-42-L

Series	Pressure PN	Tube O.D. D1 + Tol.	Thread G	L	L1	L2	d	SW	Part code
S	800	6	M 14 x 1.5	18.0	11.5	10.5	3	17	BAN-06-S
S	800	8	M 16 x 1.5	20.0	12.0	11.0	5	19	BAN-08-S
S	800	10	M 18 x 1.5	20.5	12.5	12.5	6	22	BAN-10-S
S	630	12	M 20 x 1.5	21.0	12.5	13.0	8	24	BAN-12-S
S	630	14	M 22 x 1.5	23.0	14.0	14.5	9	27	BAN-14-S
S	630	16	M 24 x 1.5	26.5	15.0	17.0	11	30	BAN-16-S
S	420	20	M 30 x 2	27.5	18.5	17.5	14	36	BAN-20-S
S	420	25	M 36 x 2	30.5	20.0	20.0	19	46	BAN-25-S
S	420	30	M 42 x 2	32.0	22.0	21.5	23	50	BAN-30-S
S	420 (1)	38	M 52 x 2	38.0	26.0	26.5	30	60	BAN-38-S

(1) In the 420 bar section, the normal safety factor of 4:1 is reduced to 3:1.