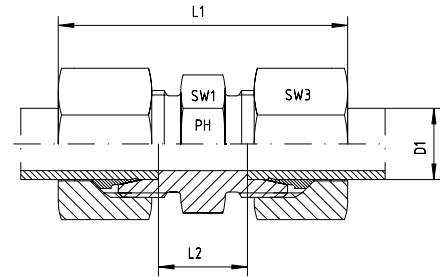


Straight coupling

BOOK INDEX

SECTION INDEX

to ISO 8434-1 / DIN 2353



Series	Pressure PN	Tube O.D. D1	Approx. Dimensions				Part code
			L1	L2	SW1	SW3	
LL	100	4	35.0	12	9	10	GV-LL-04
LL	100	6	36.0	9	11	12	GV-LL-06
LL	100	8	38.5	12	12	14	GV-LL-08

Series	Pressure PN	Tube O.D. D1	Approx. Dimensions				Part code
			L1	L2	SW1	SW3	
L	500	6	44.0	10	12	14	GV-L-06
L	500	8	45.0	11	14	17	GV-L-08
L	500	10	48.0	13	17	19	GV-L-10
L	400	12	49.0	14	19	22	GV-L-12
L	400	15	54.0	16	24	27	GV-L-15
L	400	18	56.0	16	27	32	GV-L-18
L	250	22	63.0	20	32	36	GV-L-22
L	250	28	65.0	21	41	41	GV-L-28
L	250	35	74.0	20	46	50	GV-L-35
L	250	42	75.0	21	55	60	GV-L-42

Series	Pressure PN	Tube O.D. D1	Approx. Dimensions				Part code
			L1	L2	SW1	SW3	
S	800	6	50.0	16	14	17	GV-S-06
S	800	8	52.0	18	17	19	GV-S-08
S	800	10	54.0	17	19	22	GV-S-10
S	630	12	57.0	19	22	24	GV-S-12
S	630	14	63.0	22	24	27	GV-S-14
S	630	16	65.0	21	27	30	GV-S-16
S	420	20	73.0	23	32	36	GV-S-20
S	420	25	84.0	26	41	46	GV-S-25
S	420	30	88.0	27	46	50	GV-S-30
S	420	38	99.0	29	55	60	GV-S-38

Fittings can be supplied with nuts with silver-plated threads to help to prevent galling, or can be supplied body only - no nut or cutting ring.

If you require silver-plated nuts, use suffix -SC. If you require body only, use suffix -OMD.

Eg. GV-L-12-SC or, GV-L-12-OMD.