

Male stud coupling to BSP parallel

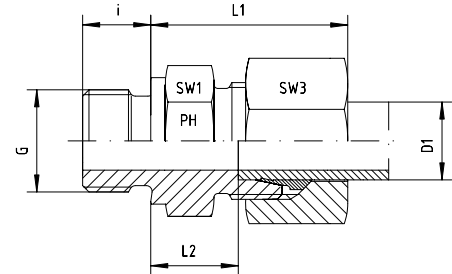
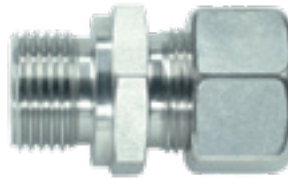
BOOK INDEX

SECTION INDEX

to ISO 8434-1 / DIN 2353

LL and L series

Form B sealing shoulder



Series	Pressure PN	Tube O.D. D1	Thread G	Approx. Dimensions					Part code
				L1	L2	i	SW1	SW3	
LL	100	4	G 1/8"	19.0	9.5	8	14	10	GE-LLR-04-G 1/8"
LL	100	6	G 1/8"	20.0	9.5	8	14	12	GE-LLR-06-G 1/8"
LL	100	8	G 1/8"		9.0	8	14	14	GE-LLR-08-G 1/8"

Series	Pressure PN	Tube O.D. D1	Thread G	Approx. Dimensions					Part code
				L1	L2	i	SW1	SW3	
L	315	6	G 1/8"	23.0	8.5	8	14	14	GE-LR-06-G 1/8"
L	315	6	G 1/4"	27.0	9.0	12	19	14	GE-LR-06-G 1/4"
L	315	6	G 3/8"	27.0	11.5	12	22	14	GE-LR-06-G 3/8"
L	315	6	G 1/2"	29.0	12.0	14	27	14	GE-LR-06-G 1/2"
L	315	8	G 1/8"	26.0	9.5	8	14	17	GE-LR-08-G 1/8"
L	315	8	G 1/4"	25.0	10.0	12	19	17	GE-LR-08-G 1/4"
L	315	8	G 3/8"	28.5	11.5	12	22	17	GE-LR-08-G 3/8"
L	315	8	G 1/2"	28.5	13.0	14	27	17	GE-LR-08-G 1/2"
L	315	10	G 1/8"	27.5	11.0	8	17	19	GE-LR-10-G 1/8"
L	315	10	G 1/4"	26.0	11.0	12	19	19	GE-LR-10-G 1/4"
L	315	10	G 3/8"	30.5	12.5	12	22	19	GE-LR-10-G 3/8"
L	315	10	G 1/2"	32.5	13.0	14	27	19	GE-LR-10-G 1/2"
L	315	10	G 3/4"			16	32	19	GE-LR-10-G 3/4"
L	315	12	G 1/8"	29.0	11.0	8	19	22	GE-LR-12-G 1/8"
L	315	12	G 1/4"	30.0	12.0	12	19	22	GE-LR-12-G 1/4"
L	315	12	G 3/8"	27.0	12.5	12	22	22	GE-LR-12-G 3/8"
L	315	12	G 1/2"	31.0	13.0	14	27	22	GE-LR-12-G 1/2"
L	315	12	G 3/4"	31.0	14.0	16	32	22	GE-LR-12-G 3/4"
L	315	15	G 1/4"	32.0	13.0	12	24	27	GE-LR-15-G 1/4"
L	315	15	G 3/8"	31.0	13.5	12	24	27	GE-LR-15-G 3/8"
L	315	15	G 1/2"	29.0	14.0	14	27	27	GE-LR-15-G 1/2"
L	315	15	G 3/4"	32.5	15.0	16	32	27	GE-LR-15-G 3/4"
L	315	15	G 1"			18	41	27	GE-LR-15-G 1"
L	315	18	G 3/8"	31.0	12.5	12	27	32	GE-LR-18-G 3/8"
L	315	18	G 1/2"	31.0	14.5	14	27	32	GE-LR-18-G 1/2"
L	315	18	G 3/4"	34.0	14.5	16	32	32	GE-LR-18-G 3/4"
L	315	18	G 1"		16.5	18	41	32	GE-LR-18-G 1"
L	160	22	G 3/8"	49.0	16.0	12	32	36	GE-LR-22-G 3/8"
L	160	22	G 1/2"	37.0	16.5	14	32	36	GE-LR-22-G 1/2"
L	160	22	G 3/4"	33.0	16.5	16	32	36	GE-LR-22-G 3/4"
L	160	22	G 1"	38.0	17.5	18	41	36	GE-LR-22-G 1"
L	160	22	G 1 1/4"			20	50	36	GE-LR-22-G 1 1/4"
L	160	28	G 1/2"		17.5	14	41	41	GE-LR-28-G 1/2"
L	160	28	G 3/4"	38.0	17.5	16	41	41	GE-LR-28-G 3/4"
L	160	28	G 1"	34.0	17.5	18	41	41	GE-LR-28-G 1"
L	160	28	G 1 1/4"		18.5	20	50	41	GE-LR-28-G 1 1/4"
L	160	28	G 1 1/2"	43.0	20.5	22	55	41	GE-LR-28-G 1 1/2"
L	160	35	G 3/4"	42.0	18.5	16	46	50	GE-LR-35-G 3/4"
L	160	35	G 1"	42.0	17.5	18	46	50	GE-LR-35-G 1"
L	160	35	G 1 1/4"	39.0	17.5	20	50	50	GE-LR-35-G 1 1/4"
L	160	35	G 1 1/2"	44.0	19.5	22	55	50	GE-LR-35-G 1 1/2"
L	160	42	G 1"	47.0	19.0	18	55	60	GE-LR-42-G 1"
L	160	42	G 1 1/4"	47.0	19.0	20	55	60	GE-LR-42-G 1 1/4"
L	160	42	G 1 1/2"	47.0	19.0	22	55	60	GE-LR-42-G 1 1/2"
L	160	42	G 2"				70	60	GE-LR-42-G 2"