



24° compression fittings to ISO 8434-1 / DIN 2353

Male stud coupling to BSP parallel – captive seal

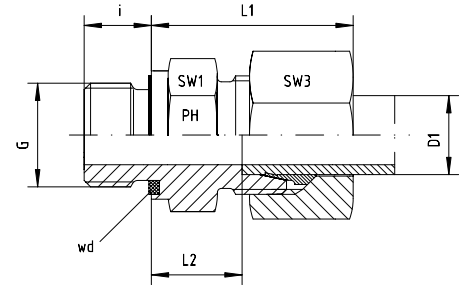
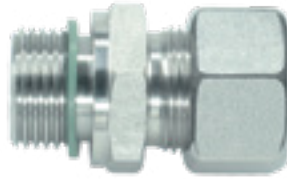
BOOK INDEX

SECTION INDEX

to ISO 8434-1 / DIN 2353

S series

Captive Viton elastomeric
soft seal



| Series | Pressure PN | Tube O.D. D1 | Thread G | Approx. Dimensions | | | | | Part code |
|--------|----------------|-----------------|-------------|--------------------|------|----|-----|-----|----------------------|
| | | | | L1 | L2 | i | SW1 | SW3 | |
| S | 800 | 6 | G 1/8" | 28.0 | 13.0 | 8 | | 17 | GE-SR-06-G 1/8"-wd |
| S | 800 | 6 | G 1/4" | 28.0 | 13.0 | 12 | 19 | 17 | GE-SR-06-G 1/4"-wd |
| S | 800 | 6 | G 3/8" | 30.0 | 15.5 | 12 | 22 | 19 | GE-SR-06-G 3/8"-wd |
| S | 630 | 6 | G 1/2" | 34.0 | 17.0 | 14 | 27 | 19 | GE-SR-06-G 1/2"-wd |
| S | 800 | 8 | G 1/8" | | 14.0 | 8 | 17 | 19 | GE-SR-08-G 1/8"-wd |
| S | 800 | 8 | G 1/4" | 30.0 | 15.0 | 12 | 19 | 19 | GE-SR-08-G 1/4"-wd |
| S | 800 | 8 | G 3/8" | | 15.5 | 12 | 22 | 19 | GE-SR-08-G 3/8"-wd |
| S | 630 | 8 | G 1/2" | | 15.0 | 14 | 27 | 19 | GE-SR-08-G 1/2"-wd |
| S | 800 | 10 | G 1/8" | | 13.5 | 8 | 19 | 22 | GE-SR-10-G 1/8"-wd |
| S | 800 | 10 | G 1/4" | | 14.5 | 12 | 19 | 22 | GE-SR-10-G 1/4"-wd |
| S | 800 | 10 | G 3/8" | 31.0 | 15.0 | 12 | 22 | 22 | GE-SR-10-G 3/8"-wd |
| S | 630 | 10 | G 1/2" | | 13.5 | 14 | 27 | 22 | GE-SR-10-G 1/2"-wd |
| S | 420 | 10 | G 3/4" | 36.0 | 17.5 | 16 | 32 | 22 | GE-SR-10-G 3/4"-wd |
| S | 630 | 12 | G 1/4" | | 16.5 | 12 | 22 | 24 | GE-SR-12-G 1/4"-wd |
| S | 630 | 12 | G 3/8" | 33.0 | 17.0 | 12 | 22 | 24 | GE-SR-12-G 3/8"-wd |
| S | 630 | 12 | G 1/2" | 34.0 | 17.5 | 14 | 27 | 24 | GE-SR-12-G 1/2"-wd |
| S | 420 | 12 | G 3/4" | 36.0 | 17.5 | 16 | 32 | 24 | GE-SR-12-G 3/4"-wd |
| S | 630 | 14 | G 1/4" | 37.0 | 17.0 | 12 | 24 | 27 | GE-SR-14-G 1/4"-wd |
| S | 630 | 14 | G 3/8" | 37.0 | 17.0 | 12 | 24 | 27 | GE-SR-14-G 3/8"-wd |
| S | 630 | 14 | G 1/2" | 37.0 | 19.0 | 14 | 27 | 27 | GE-SR-14-G 1/2"-wd |
| S | 420 | 14 | G 3/4" | | 19.0 | 16 | 32 | 27 | GE-SR-14-G 3/4"-wd |
| S | 630 | 16 | G 1/4" | 38.0 | 17.5 | 12 | 27 | 30 | GE-SR-16-G 1/4"-wd |
| S | 630 | 16 | G 3/8" | | 18.0 | 12 | 27 | 30 | GE-SR-16-G 3/8"-wd |
| S | 630 | 16 | G 1/2" | 37.0 | 18.5 | 14 | 27 | 30 | GE-SR-16-G 1/2"-wd |
| S | 420 | 16 | G 3/4" | 39.0 | 20.5 | 16 | 32 | 30 | GE-SR-16-G 3/4"-wd |
| S | 420 | 16 | G 1" | 43.5 | 22.5 | 18 | 41 | 30 | GE-SR-16-G 1"-wd |
| S | 420 | 20 | G 3/8" | | 18.0 | 12 | 32 | 36 | GE-SR-20-G 3/8"-wd |
| S | 420 | 20 | G 1/2" | | 20.5 | 14 | 32 | 36 | GE-SR-20-G 1/2"-wd |
| S | 420 | 20 | G 3/4" | 42.0 | 20.5 | 16 | 32 | 36 | GE-SR-20-G 3/4"-wd |
| S | 420 | 20 | G 1" | | 22.5 | 18 | 41 | 36 | GE-SR-20-G 1"-wd |
| S | 420 | 20 | G 1 1/4" | | 22.5 | 20 | 50 | 36 | GE-SR-20-G 1 1/4"-wd |
| S | 420 | 25 | G 1/2" | | 23.0 | 14 | 41 | 46 | GE-SR-25-G 1/2"-wd |
| S | 420 | 25 | G 3/4" | | 23.0 | 16 | 41 | 46 | GE-SR-25-G 3/4"-wd |
| S | 420 | 25 | G 1" | 47.0 | 23.0 | 18 | 41 | 46 | GE-SR-25-G 1"-wd |
| S | 420 | 25 | G 1 1/4" | | 23.0 | 20 | 50 | 46 | GE-SR-25-G 1 1/4"-wd |
| S | 420 | 30 | G 3/4" | | 25.5 | 16 | 46 | 50 | GE-SR-30-G 3/4"-wd |
| S | 420 | 30 | G 1" | 50.0 | 23.5 | 18 | 46 | 50 | GE-SR-30-G 1"-wd |
| S | 420 | 30 | G 1 1/4" | 50.0 | 23.5 | 20 | 50 | 50 | GE-SR-30-G 1 1/4"-wd |
| S | 420 | 30 | G 1 1/2" | 50.0 | 23.5 | 22 | 55 | 50 | GE-SR-30-G 1 1/2"-wd |
| S | 420 | 38 | G 1" | 42.0 | 26.0 | 18 | 46 | 50 | GE-SR-38-G 1"-wd |
| S | 420 | 38 | G 1 1/4" | | 23.0 | 20 | 55 | 60 | GE-SR-38-G 1 1/4"-wd |
| S | 420 | 38 | G 1 1/2" | 57.0 | 26.0 | 22 | 55 | 60 | GE-SR-38-G 1 1/2"-wd |
| S | 250 | 38 | G 2" | | | | 70 | 60 | GE-SR-38-G 2"-wd |