



24° compression fittings to ISO 8434-1 / DIN 2353

Male stud coupling to metric parallel – captive seal

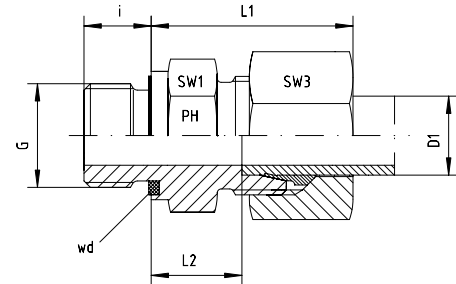
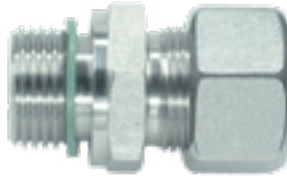
BOOK INDEX

SECTION INDEX

to ISO 8434-1 / DIN 2353

LL and L series

Captive Viton elastomeric
soft seal



Series	Pressure PN	Tube O.D. D1	Thread G	Approx. Dimensions					Part code
				L1	L2	i	SW1	SW3	
LL	100	8	M 10 x 1		9.0	8	14	14	GE-LL-08-M 10x1-wd

Series	Pressure PN	Tube O.D. D1	Thread G	Approx. Dimensions					Part number Standard
				L1	L2	i	SW1	SW3	
L	500	6	M 10 x 1	23.0	8.5	8	14	14	GE-L-06-M 10x1-wd
L	500	6	M 12 x 1.5		10.0	12	17	14	GE-L-06-M 12x1.5-wd
L	500	6	M 14 x 1.5	27.0	10.0	12	19	14	GE-L-06-M 14x1.5-wd
L	500	8	M 10 x 1	26.0	9.5	8	17	17	GE-L-08-M 10x1-wd
L	500	8	M 12 x 1.5	25.0	10.0	12	17	17	GE-L-08-M 12x1.5-wd
L	500	8	M 14 x 1.5	27.0	10.0	12	19	17	GE-L-08-M 14x1.5-wd
L	400	8	M 16 x 1.5	27.5	11.5	12	22	17	GE-L-08-M 16x1.5-wd
L	400	8	M 18 x 1.5	27.5	11.5	12	24	17	GE-L-08-M 18x1.5-wd
L	500	10	M 10 x 1		11.0	8	17	19	GE-L-10-M 10x1-wd
L	500	10	M 12 x 1.5	28.5	11.5	12	17	19	GE-L-10-M 12x1.5-wd
L	500	10	M 14 x 1.5	26.0	11.0	12	19	19	GE-L-10-M 14x1.5-wd
L	400	10	M 16 x 1.5	30.0	12.5	12	22	19	GE-L-10-M 16x1.5-wd
L	400	10	M 18 x 1.5	30.0	12.5	12	24	19	GE-L-10-M 18x1.5-wd
L	400	10	M 22 x 1.5		14.0	14	27	19	GE-L-10-M 22x1.5-wd
L	400	12	M 12 x 1.5	28.0	13.0	12	19	22	GE-L-12-M 12x1.5-wd
L	400	12	M 14 x 1.5	28.0	12.5	12	19	22	GE-L-12-M 14x1.5-wd
L	400	12	M 16 x 1.5	27.0	12.5	12	22	22	GE-L-12-M 16x1.5-wd
L	400	12	M 18 x 1.5	30.0	12.5	12	24	22	GE-L-12-M 18x1.5-wd
L	400	12	M 22 x 1.5		14.0	14	27	22	GE-L-12-M 22x1.5-wd
L	400	15	M 16 x 1.5	32.0	13.5	12	24	27	GE-L-15-M 16x1.5-wd
L	400	15	M 18 x 1.5	29.0	13.5	12	24	27	GE-L-15-M 18x1.5-wd
L	400	15	M 22 x 1.5	33.0	15.0	14	27	27	GE-L-15-M 22x1.5-wd
L	400	18	M 18 x 1.5	33.0	14.0	12	27	32	GE-L-18-M 18x1.5-wd
L	400	18	M 22 x 1.5	31.0	14.5	14	27	32	GE-L-18-M 22x1.5-wd
L	250	18	M 26 x 1.5		14.5	16	32	32	GE-L-18-M 26x1.5-wd
L	250	22	M 22 x 1.5	38.0	17.5	14	32	36	GE-L-22-M 22x1.5-wd
L	250	22	M 26 x 1.5	33.0	16.5	16	32	36	GE-L-22-M 26x1.5-wd
L	250	28	M 33 x 2	34.0	17.5	18	41	41	GE-L-28-M 33x2-wd
L	250	35	M 42 x 2	39.0	17.5	20	50	50	GE-L-35-M 42x2-wd
L	250	42	M 48 x 2	42.0	19.0	22	55	60	GE-L-42-M 48x2-wd

Fittings can be supplied with nuts with silver-plated threads to help to prevent galling, or can be supplied body only - no nut or cutting ring.

If you require silver-plated nuts, use suffix -SC. If you require body only, use suffix -OMD.

Eg. GE-L-12-M 14x1.5-wd-SC, or GE-L-12-M 14x1.5-wd-OMD.