

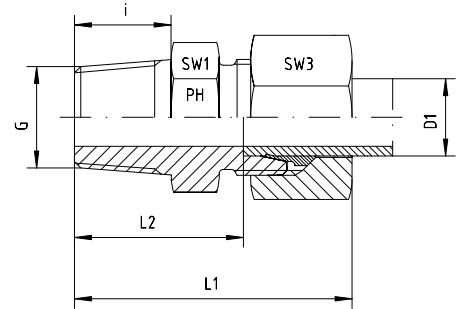
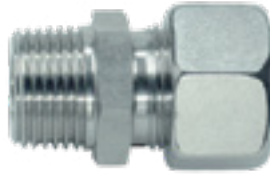
Male stud coupling to metric taper

BOOK INDEX

SECTION INDEX

to ISO 8434-1 / DIN 2353

LL and L series



Series	Pressure PN	Tube O.D. D1	Thread G	Approx. Dimensions					Part code
				L1	L2	i	SW1	SW3	
LL	100	4	M 6 x 1 keg	26.0	16.0	8	10	10	GE-LL-04-M 6x1-k
LL	100	4	M 8 x 1 keg	26.0	16.0	8	10	10	GE-LL-04-M 8x1-k
LL	100	4	M 10 x 1 keg	26.0	16.0	8	11	10	GE-LL-04-M 10x1-k
LL	100	6	M 6 x 1 keg	26.0	14.5	8	11	12	GE-LL-06-M 6x1-k
LL	100	6	M 8 x 1 keg	26.0	14.5	8	11	12	GE-LL-06-M 8x1-k
LL	100	6	M 10 x 1 keg	26.0	14.5	8	11	12	GE-LL-06-M 10x1-k
LL	100	8	M 6 x 1 keg	28.0	16.5	8	12	14	GE-LL-08-M 6x1-k
LL	100	8	M 8 x 1 keg	28.0	16.5	8	12	14	GE-LL-08-M 8x1-k
LL	100	8	M 10 x 1 keg	28.0	16.5	8	12	14	GE-LL-08-M 10x1-k

Series	Pressure PN	Tube O.D. D1	Thread G	Approx. Dimensions					Part code
				L1	L2	i	SW1	SW3	
L	315	6	M 10 x 1 keg	30.5	16.0	8	14	14	GE-L-06-M 10x1-k
L	315	8	M 12 x 1.5 keg	35.0	20.0	12	17	17	GE-L-08-M 12x1.5-k
L	315	10	M 14 x 1.5 keg	36.0	21.0	12	17	19	GE-L-10-M 14x1.5-k
L	315	12	M 16 x 1.5 keg	37.0	22.0	12	19	22	GE-L-12-M 16x1.5-k
L	315	15	M 18 x 1.5 keg	40.0	23.0	12	24	27	GE-L-15-M 18x1.5-k
L	315	18	M 22 x 1.5 keg	42.0	25.5	14	27	32	GE-L-18-M 22x1.5-k

Fittings can be supplied with nuts with silver-plated threads to help to prevent galling, or can be supplied body only - no nut or cutting ring.

If you require silver-plated nuts, use suffix -SC. If you require body only, use suffix -OMD.

Eg. GE-L-12-M 16x1.5-k-SC, or GE-L-12-M 16x1.5-k-OMD.