

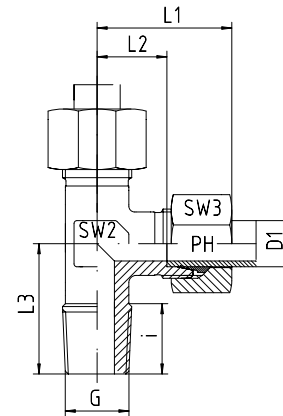
Male stud run tee to metric taper

BOOK INDEX

SECTION INDEX

to ISO 8434-1 / DIN 2353

LL, L and S series



Series	Pressure PN	Tube O.D. D1	Thread G	Approx. Dimensions						Part code
				L1	L2	L3	i	SW2	SW3	
LL	100	4	M 6 x 1 keg	21	11.0	17	8	9	10	LE-LL-04-M 6x1-k
LL	100	4	M 8 x 1 keg	21	11.0	17	8	9	10	LE-LL-04-M 8x1-k
LL	100	6	M 6 x 1 keg				8	9	12	LE-LL-06-M 6x1-k
LL	100	6	M 8 x 1 keg				8	9	12	LE-LL-06-M 8x1-k
LL	100	6	M 10 x 1 keg	21	9.5	17	8	9	12	LE-LL-06-M 10x1-k
LL	100	8	M 8 x 1 keg				8	12	14	LE-LL-08-M 8x1-k
LL	100	8	M 10 x 1 keg	23	11.5	20	8	12	14	LE-LL-08-M 10x1-k

Series	Pressure PN	Tube O.D. D1	Thread G	Approx. Dimensions						Part code
				L1	L2	L3	i	SW2	SW3	
L	315	6	M 10 x 1 keg	27	12.0	20	8	12	14	LE-L-06-M 10x1-k
L	315	8	M 12 x 1.5 keg	29	14.0	26	12	12	17	LE-L-08-M 12x1.5-k
L	315	10	M 14 x 1.5 keg	30	15.0	27	12	14	19	LE-L-10-M 14x1.5-k
L	315	12	M 16 x 1.5 keg	32	17.0	28	12	17	22	LE-L-12-M 16x1.5-k
L	315	15	M 18 x 1.5 keg	36	21.0	32	12	19	27	LE-L-15-M 18x1.5-k
L	315	18	M 22 x 1.5 keg	40	23.0	36	14	24	32	LE-L-18-M 22x1.5-k

Series	Pressure PN ⁽¹⁾	Tube O.D. D1	Thread G	Approx. Dimensions						Part code
				L1	L2	L3	i	SW2	SW3	
S	630	6	M 12 x 1.5 keg	31	16.0	26	12	12	17	LE-S-06-M 12x1.5-k
S	630	8	M 14 x 1.5 keg	32	17.0	27	12	14	19	LE-S-08-M 14x1.5-k
S	630	10	M 16 x 1.5 keg	34	17.5	28	12	17	22	LE-S-10-M 16x1.5-k
S	630	12	M 18 x 1.5 keg	38	21.5	28	12	17	24	LE-S-12-M 18x1.5-k
S	630	14	M 20 x 1.5 keg	40	22.0	32	14	19	27	LE-S-14-M 20x1.5-k
S	400	16	M 22 x 1.5 keg	43	24.5	32	14	24	30	LE-S-16-M 22x1.5-k

⁽¹⁾ These pressure ratings are only valid when screwed into a taper female thread.

Fittings can be supplied with nuts with silver-plated threads to help to prevent galling, or can be supplied body only - no nut or cutting ring.

If you require silver-plated nuts, use suffix -SC. If you require body only, use suffix -OMD.

Eg. LE-L-12-M 16x1.5-k-SC, or LE-L-12-M 16x1.5-k-OMD