

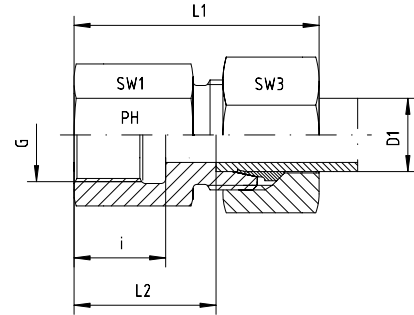
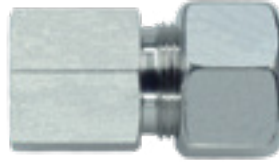
## Female stud coupling to metric parallel

BOOK INDEX

SECTION INDEX

to ISO 8434-1 / DIN 2353

L and S series



Series	Pressure PN	Tube O.D. D1	Thread G	Approx. Dimensions					Part code
				L1	L2	i	SW1	SW3	
L	315	6	M 10 x 1	34	19.5	12.5	14	14	GAI-L-06-M 10x1
L	315	8	M 12 x 1.5	39	24.0	17.0	17	17	GAI-L-08-M 12x1.5
L	315	10	M 14 x 1.5	40	25.0	17.0	19	19	GAI-L-10-M 14x1.5
L	315	12	M 16 x 1.5	41	26.0	17.0	22	22	GAI-L-12-M 16x1.5
L	315	15	M 18 x 1.5	43	28.0	17.0	24	27	GAI-L-15-M 18x1.5
L	315	18	M 22 x 1.5	46	29.5	19.0	30	32	GAI-L-18-M 22x1.5
L	160	22	M 26 x 1.5	51	34.5	21.0	32	36	GAI-L-22-M 26x1.5
L	160	28	M 33 x 2	54	37.5	24.0	41	41	GAI-L-28-M 33x2
L	160	35	M 42 x 2	62	40.5	26.0	50	50	GAI-L-35-M 42x2
L	160	42	M 48 x 2	65	42.0	28.0	55	60	GAI-L-42-M 48x2

Series	Pressure PN	Tube O.D. D1	Thread G	Approx. Dimensions					Part code
				L1	L2	i	SW1	SW3	
S	630	6	M 12 x 1.5	41	26.0	17.0	17	17	GAI-S-06-M 12x1.5
S	630	8	M 14 x 1.5	41	26.0	17.0	19	19	GAI-S-08-M 14x1.5
S	630	10	M 16 x 1.5	43	26.5	17.0	22	22	GAI-S-10-M 16x1.5
S	630	12	M 18 x 1.5	44	27.5	17.0	24	24	GAI-S-12-M 18x1.5
S	630	14	M 20 x 1.5	49	31.0	19.0	27	27	GAI-S-14-M 20x1.5
S	400	16	M 22 x 1.5	49	30.5	19.0	30	30	GAI-S-16-M 22x1.5
S	400	20	M 27 x 2	56	34.5	22.0	32	36	GAI-S-20-M 27x2
S	400	25	M 33 x 2	61	37.0	24.0	41	46	GAI-S-25-M 33x2
S	400	30	M 42 x 2	68	41.5	26.0	50	50	GAI-S-30-M 42x2
S	315	38	M 48 x 2	74	43.0	28.0	55	60	GAI-S-38-M 48x2

Fittings can be supplied with nuts with silver-plated threads to help to prevent galling, or can be supplied body only - no nut or cutting ring.

If you require silver-plated nuts, use suffix -SC. If you require body only, use suffix -OMD.

Eg. GAI-L-12-M 16x1.5-SC, or GAI-L-12-M 16x1.5-OMD