

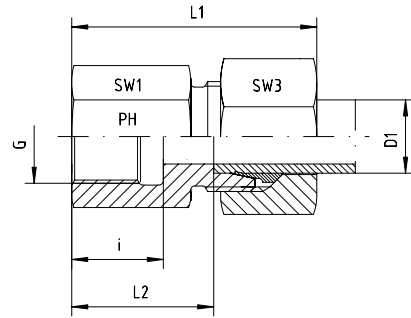
## Female stud coupling to NPT

BOOK INDEX

SECTION INDEX

to ISO 8434-1 / DIN 2353

L and S series



Series	Pressure PN	Tube O.D. D1	Thread G	Approx. Dimensions					Part code
				L1	L2	i	SW1	SW3	
L	315	6	1/8" NPT	34	19.0	11.6	14	14	GAI-L-06-1/8"-NPT
L	315	6	1/4" NPT	38	23.5	16.4	19	14	GAI-L-06-1/4"-NPT
L	315	6	3/8" NPT			17.4	24	14	GAI-L-06-3/8"-NPT
L	315	8	1/4" NPT	38	23.5	16.4	19	17	GAI-L-08-1/4"-NPT
L	315	8	3/8" NPT			17.4	24	17	GAI-L-08-3/8"-NPT
L	315	10	1/4" NPT	39	24.0	16.4	19	19	GAI-L-10-1/4"-NPT
L	315	10	3/8" NPT	43	26.0	17.4	24	19	GAI-L-10-3/8"-NPT
L	315	10	1/2" NPT			22.6	27	19	GAI-L-10-1/2"-NPT
L	315	12	1/4" NPT			16.4	19	22	GAI-L-12-1/4"-NPT
L	315	12	3/8" NPT	42	27.0	17.4	24	22	GAI-L-12-3/8"-NPT
L	315	12	1/2" NPT	47	32.0	22.6	27	22	GAI-L-12-1/2"-NPT
L	315	15	3/8" NPT			17.4	24	27	GAI-L-15-3/8"-NPT
L	315	15	1/2" NPT	48	33.0	22.6	27	27	GAI-L-15-1/2"-NPT
L	315	18	1/2" NPT	49	32.5	22.6	27	27	GAI-L-18-1/2"-NPT
L	160	22	3/4" NPT	52	35.5	23.1	36	36	GAI-L-22-3/4"-NPT
L	160	28	1" NPT	57	40.5	27.8	41	41	GAI-L-28-1"-NPT
L	160	35	1 1/4" NPT	62	40.5	28.3	55	50	GAI-L-35-1 1/4"-NPT
L	160	42	1 1/2" NPT	65	42.0	28.3	60	60	GAI-L-42-1 1/2"-NPT

Series	Pressure PN	Tube O.D. D1	Thread G	Approx. Dimensions					Part code
				L1	L2	i	SW1	SW3	
S	630	6	1/4" NPT	41	26.0	16.4	19	17	GAI-S-06-1/4"-NPT
S	630	8	1/4" NPT	41	26.0	16.4	19	19	GAI-S-08-1/4"-NPT
S	630	10	3/8" NPT	44	27.0	17.4	24	22	GAI-S-10-3/8"-NPT
S	630	12	3/8" NPT	44	27.5	17.4	24	24	GAI-S-12-3/8"-NPT
S	630	12	1/2" NPT	50	33.5	22.6	27	24	GAI-S-12-1/2"-NPT
S	630	14	1/2" NPT	53	35.0	22.6	27	27	GAI-S-14-1/2"-NPT
S	400	16	3/8" NPT	48	27.5	17.4	27	30	GAI-S-16-3/8"-NPT
S	400	16	1/2" NPT	50	34.5	22.6	27	30	GAI-S-16-1/2"-NPT
S	400	20	3/4" NPT	57	35.5	23.1	32	36	GAI-S-20-3/4"-NPT
S	400	25	1" NPT	65	41.0	27.8	41	46	GAI-S-25-1"-NPT
S	400	30	1 1/4" NPT	70	43.5	28.3	55	50	GAI-S-30-1 1/4"-NPT
S	315	38	1 1/2" NPT	74	43.0	28.3	60	60	GAI-S-38-1 1/2"-NPT

Fittings can be supplied with nuts with silver-plated threads to help to prevent galling, or can be supplied body only - no nut or cutting ring.

If you require silver-plated nuts, use suffix -SC. If you require body only, use suffix -OMD.

Eg. GAI-L-12-1/2"-NPT-SC, or GAI-L-12-1/2"-NPT-OMD