

Adjustable standpipe reducer

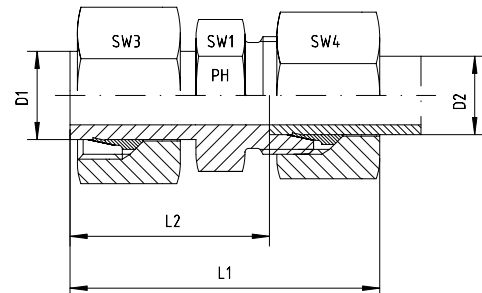
BOOK INDEX

SECTION INDEX

to ISO 8434-1 / DIN 2353

LL and L series

The swivel female must be finally assembled with a 1/2 turn after torque increases.



Series	Pressure PN	Tube O.D. D1	Tube O.D. D2	Approx. Dimensions					Part code
				L1	L2	SW1	SW3	SW4	
LL	100	6	4	35.0	23.0	10	12	10	KOR-LL-06/04
L	315	8	6	43.5	25.5	12	17	14	KOR-L-08/06
L	315	10	6	44.0	29.0	12	19	14	KOR-L-10/06
L	315	10	8	44.0	29.0	14	19	17	KOR-L-10/08
L	315	12	6	44.0	29.0	14	22	14	KOR-L-12/06
L	315	12	8	44.0	29.0	14	22	17	KOR-L-12/08
L	315	12	10	45.0	30.0	17	22	19	KOR-L-12/10
L	315	15	6	45.5	30.5	17	27	14	KOR-L-15/06
L	315	15	8	45.5	30.5	17	27	17	KOR-L-15/08
L	315	15	10	46.5	31.5	17	27	19	KOR-L-15/10
L	315	15	12	46.5	31.5	19	27	22	KOR-L-15/12
L	315	18	6	47.5	32.5	19	32	14	KOR-L-18/06
L	315	18	8	47.5	32.5	19	32	17	KOR-L-18/08
L	315	18	10	48.0	33.0	19	32	19	KOR-L-18/10
L	315	18	12	48.0	33.0	19	32	22	KOR-L-18/12
L	315	18	15	49.0	34.0	22	32	27	KOR-L-18/15
L	160	22	6	50.0	35.0	24	36	14	KOR-L-22/06
L	160	22	8	50.0	35.0	24	36	17	KOR-L-22/08
L	160	22	10	51.0	36.0	24	36	19	KOR-L-22/10
L	160	22	12	51.0	36.0	24	36	22	KOR-L-22/12
L	160	22	15	52.0	37.0	24	36	27	KOR-L-22/15
L	160	22	18	53.0	36.5	27	36	32	KOR-L-22/18
L	160	28	6	50.0	35.0	30	41	14	KOR-L-28/06
L	160	28	8	50.0	35.0	30	41	17	KOR-L-28/08
L	160	28	10	51.0	36.0	30	41	19	KOR-L-28/10
L	160	28	12	51.0	36.0	30	41	22	KOR-L-28/12
L	160	28	15	52.0	37.0	30	41	27	KOR-L-28/15
L	160	28	18	54.0	37.5	30	41	32	KOR-L-28/18
L	160	28	22	55.5	39.0	30	41	36	KOR-L-28/22
L	160	35	6	58.0	43.0	36	50	14	KOR-L-35/06
L	160	35	8	58.0	43.0	36	50	17	KOR-L-35/08
L	160	35	10	59.0	44.0	36	50	19	KOR-L-35/10
L	160	35	12	59.0	44.0	36	50	22	KOR-L-35/12
L	160	35	15	60.0	45.0	36	50	27	KOR-L-35/15
L	160	35	18	61.0	44.5	36	50	32	KOR-L-35/18
L	160	35	22	63.0	46.5	36	50	36	KOR-L-35/22
L	160	35	28	63.0	46.5	41	50	41	KOR-L-35/28
L	160	42	6	59.0	44.0	36	60	14	KOR-L-42/06
L	160	42	8	59.0	44.0	46	60	17	KOR-L-42/08
L	160	42	10	60.0	45.0	46	60	19	KOR-L-42/10
L	160	42	12	60.0	45.0	46	60	22	KOR-L-42/12
L	160	42	15	61.0	46.0	46	60	27	KOR-L-42/15
L	160	42	18	59.0	44.0	46	60	32	KOR-L-42/18
L	160	42	22	63.0	46.5	46	60	36	KOR-L-42/22
L	160	42	28	64.0	47.5	46	60	41	KOR-L-42/28
L	160	42	35	69.0	47.5	46	60	50	KOR-L-42/35