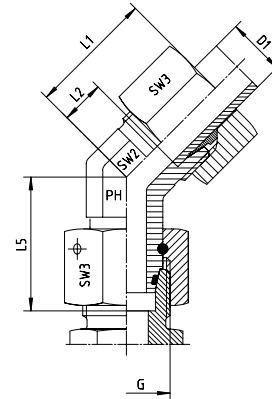


## Adjustable female 45° elbow

BOOK INDEX

SECTION INDEX

24° female and Viton O-ring  
with a profile to W DIN 3861



Series	Pressure PN	Tube O.D. D1	Thread G	Approx. Dimensions					Part code
				L1	L2	L5	SW2	SW3	
L	500	6	M 12 x 1.5	24	9.0	26.0	14	14	EV-DKOL-06
L	500	8	M 14 x 1.5	27	12.0	27.5	14	17	EV-DKOL-08
L	500	10	M 16 x 1.5	27	12.0	29.0	19	19	EV-DKOL-10
L	400	12	M 18 x 1.5	29	14.0	29.5	19	22	EV-DKOL-12
L	400	15	M 22 x 1.5	32	17.0	32.5	22	27	EV-DKOL-15
L	400	18	M 26 x 1.5	33	16.5	35.5	27	32	EV-DKOL-18
L	250	22	M 30 x 2	35	18.5	38.5	30	36	EV-DKOL-22
L	250	28	M 36 x 2	40	23.0	41.5	36	41	EV-DKOL-28
L	250	35	M 45 x 2	48	26.5	51.0	50	50	EV-DKOL-35
L	250	42	M 52 x 2	49	26.0	56.0	50	60	EV-DKOL-42

Series	Pressure PN	Tube O.D. D1	Thread G	Approx. Dimensions					Part code
				L1	L2	L5	SW2	SW3	
S	800	6	M 14 x 1.5	24	9.0	27.0	14	17	EV-DKOS-06
S	800	8	M 16 x 1.5	27	12.0	27.5	19	19	EV-DKOS-08
S	800	10	M 18 x 1.5	30	13.5	30.0	19	22	EV-DKOS-10
S	630	12	M 20 x 1.5	33	16.5	31.0	22	24	EV-DKOS-12
S	630	16	M 24 x 1.5	34	15.5	36.5	27	30	EV-DKOS-16
S	420	20	M 30 x 2	38	16.0	44.5	30	36	EV-DKOS-20
S	420	25	M 36 x 2	43	18.5	50.0	36	46	EV-DKOS-25
S	420	30	M 42 x 2	50	23.5	55.0	50	50	EV-DKOS-30
S	420	38	M 52 x 2	52	21.0	63.0	50	60	EV-DKOS-38